

horton knights of doncaster

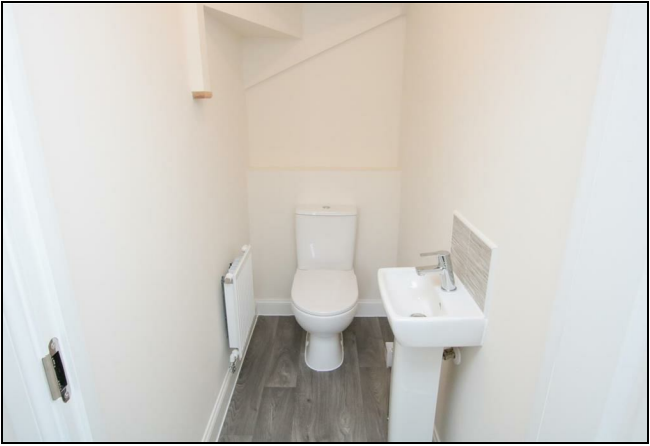
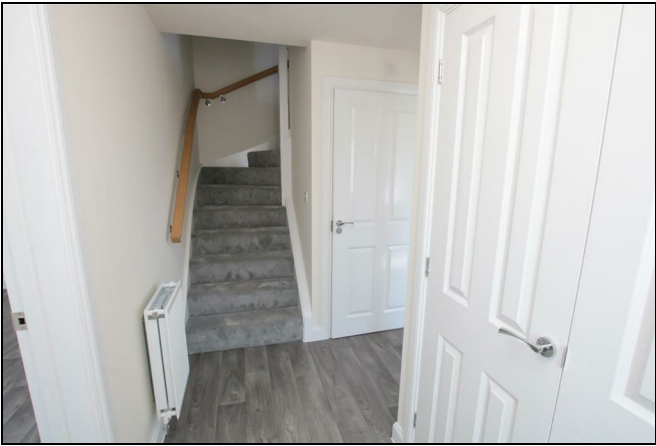
8 Deering Close, Wheatley, Doncaster, South Yorkshire, DN2 4EQ



**NEARLY NEW DETACHED PROPERTY / THREE GOOD SIZE BEDROOMS / EN- SUITE /
DOWNSTAIRS W/C / OPEN PLAN KITCHEN DINER / ALLOCATED PARKING / QUIET AREA
OF THE ESTATE //**

This nearly new home is tucked away on a quiet road on the edge of this popular development. There is ample parking available with this three bedroom property along with an enclosed rear garden. The main bedroom enjoys en-suite facilities and there is also a modern family bathroom. There is a useful downstairs w.c along with a lounge and kitchen/diner which has a range of integral appliances and storage.

£1,100 PCM



ENTRNACE HALL

With stairs leading to the first floor rand doors leading to Lounge, Dining kitchen and Downstairs w/c

DOWNSTAIRS W/C

Consisting of a wash hand basin sink and low level w.c

LOUNGE

Window to front and side aspect.

KITCHEN DINER

A wide range of wall and base units with integral appliances, window to rear, French doors to garden and space for a dining table.

BEDROOM 1

A spacious double bedroom with access to en-suite and window to front aspect.

EN-SUITE

Window to side aspect, toilet, sink and shower cubicle.

BEDROOM 2

Double bedroom with a pvc double glazed window.

BEDROOM 3

Single bedroom with a pvc double glazed window.

HOUSE BATHROOM

A pvc double glazed window and three piece white suite.

REAR GARDEN

Enclosed by fencing and brick wall to the perimeters the garden is mainly laid to lawn.

OUTSIDE

To the front of the property there is a lawned area with shrubs inset to the perimeter. With a blocked paved drive creating off street parking.

